



Vedação Roxtec RS Ex com SLF RS

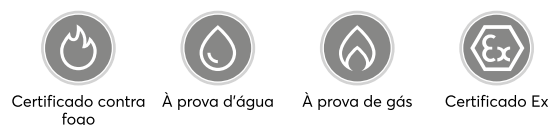
Vedação com classificação Ex para aparafusamento para uso com um único cabo ou tubo.

O Roxtec RS Ex com SLF RS é uma vedação classificada para uso em áreas Ex e Ex tb. Ela possui uma luva de metal e foi desenvolvida para uso com um único cabo ou tubo. A vedação da passagem possui duas metades com camadas removíveis, o que a torna adaptável a cabos e tubos de diferentes tamanhos. A luva é aparafusada na estrutura.

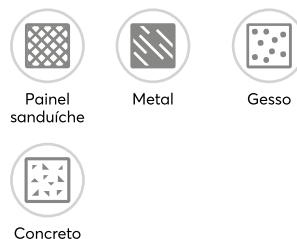


- Resistente a roedores
- Rápido e fácil de instalar

Características do produto



Estrutura da instalação



Tipo de montagem



Classificações e certificados

Fogo

- A-CLASS de acordo com o Código FTP IMO 2010
- Classificação E/EI de acordo com EN 13501
- Classificação F/T de acordo com UL 1479
- H-CLASS de acordo com curva de carga de incêndio IMO 2010 FTP Code + HC
- Jetfire de acordo com ISO 22899-1 e OTI 95634

Proteção contra vazamento

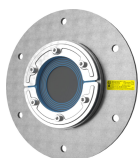
- Gás: 2,67 bar (catastrófico)
- Água: 4 bar (catastrófico)

Suporta

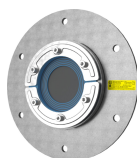
- Certificado Ex

Dados de componente de vedação

Componentes de vedação



Kit RS B ES Ex



Kit RS B PE Ex



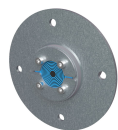
Kit RS B Ex

Para obter informações detalhadas, acesse [roxtec.com](https://www.roxtec.com).

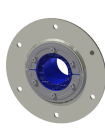


Kits de passagem pré-configurada

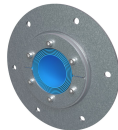
mm/kg



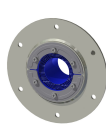
RS 50 B Ex
AISI316/GALV



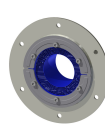
RS 100 B Ex AISI316
WOC/PRIMED



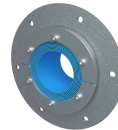
RS 100 B Ex AISI316
WOC/GALV



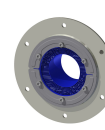
RS 100 B Ex AISI316
WOC/AISI316



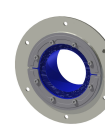
RS 125 B Ex AISI316
WOC/PRIMED



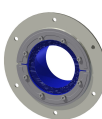
RS 125 B Ex AISI316
WOC/GALV



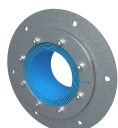
RS 125 B Ex AISI316
WOC/AISI316



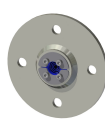
RS 150 B Ex AISI316
WOC/AISI316



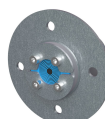
RS 150 B Ex AISI316
WOC/PRIMED



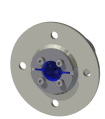
RS 150 B Ex AISI316
WOC/GALV



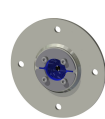
RS 25 B Ex
AISI316/AISI316



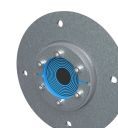
RS 43 B Ex
AISI316/GALV



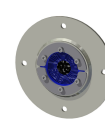
RS 43 B Ex
AISI316/AISI316



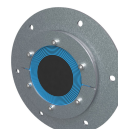
RS 50 B Ex
AISI316/AISI316



RS 75 B Ex
AISI316/GALV



RS 75 B Ex
AISI316/AISI316



RS 125 B Ex
AISI316/GALV

Título	Configuração	Dimensões da abertura Ø	Peso	Art. No.
RS 50 B Ex AISI316/GALV		65 - 65	1.4	101918
RS 125 B Ex AISI316/AISI316		142 - 142	3.9	163616
RS 100 B Ex AISI316 WOC/PRIMED	1x (48.0-70.0)	116 - 116	2.9	EXRSB0100102112
RS 100 B Ex AISI316 WOC/GALV		116 - 116	2.9	EXRSB0100102118
RS 100 B Ex AISI316 WOC/AISI316	1x (48.0-70.0)	116 - 116	2.7	EXRSB0100102121
RS 125 B Ex AISI316 WOC/PRIMED	1x (66.0-98.0)	142 - 142	3.4	EXRSB0125102112
RS 125 B Ex AISI316 WOC/GALV		142 - 142	3.6	EXRSB0125102118
RS 125 B Ex AISI316 WOC/AISI316	1x (66.0-98.0)	142 - 142	3.6	EXRSB0125102121
RS 150 B Ex AISI316 WOC/AISI316	1x (93.0-119.0)	166 - 166	4.1	EXRSB0150002121
RS 150 B Ex AISI316 WOC/PRIMED	1x (93.0-119.0)	166 - 166	4.2	EXRSB0150102112
RS 150 B Ex AISI316 WOC/GALV		166 - 166	4.5	EXRSB0150102118
RS 25 B Ex AISI316/GALV		36 - 36	0.43	EXRSB0250002118
RS 25 B Ex AISI316/AISI316	1x (3.6-12.0)		0.48	EXRSB0250002121
RS 43 B Ex AISI316/GALV		54 - 54	0.9	EXRSB0430002118
RS 43 B Ex AISI316/AISI316	1x (4.0-23.0)	54 - 54	0.9	EXRSB0430002121
RS 50 B Ex AISI316/AISI316	1x (8.0-30.0)	65 - 65	1.4	EXRSB0500002121
RS 75 B Ex AISI316/GALV		91 - 91	2	EXRSB0750002118
RS 75 B Ex AISI316/AISI316	1x (24.0-54.0)	91 - 91	2.1	EXRSB0750002121
RS 100 B Ex AISI316/GALV		116 - 116	3	EXRSB1000002118
RS 100 B Ex AISI316/AISI316		116 - 116	4.4	EXRSB1000002121
RS 125 B Ex AISI316/GALV		142 - 142	4.3	EXRSB1250002118



The product information provided by Roxtec does not release the purchaser of the Roxtec system, or part thereof, from the obligation to independently determine the suitability of the products for the intended process, installation and/or use.

Roxtec gives no guarantee for the Roxtec system or any part thereof and assumes no liability for any loss or damage whatsoever, whether direct, indirect, consequential, loss of profit or otherwise, occurred or caused by the Roxtec systems or installations containing components not manufactured by an authorized manufacturer and/or occurred or caused by the use of the Roxtec system in a manner or for an application other than for which the Roxtec system was designed or intended.

Roxtec expressly excludes any implied warranties of merchantability and fitness for a particular purpose and all other express or implied representations and warranties provided by statute or common law. User determines suitability of the Roxtec system for intended use and assumes all risk and liability in connection therewith. In no event shall Roxtec be liable for indirect, consequential, punitive, special, exemplary or incidental damages or losses.

The Roxtec products are offered and sold in accordance with the conditions of the Roxtec General Terms of Sales. The latest version of the Roxtec General Terms of Sales can be downloaded from <https://www.roxtec.com/en/about-us/about-roxtec/general-terms-of-sales/>

We reserve the right to make changes to the product and technical information without further notice. Any errors in print or entry are no claims for indemnity. The content of this publication is the property of Roxtec International AB and is protected by copyright.

This document was generated on: 2024-04-15